



e-ISSN: 2319-8753 | p-ISSN: 2347-6710

IJIRSET

International Journal of Innovative Research in
SCIENCE | ENGINEERING | TECHNOLOGY



INTERNATIONAL JOURNAL OF INNOVATIVE RESEARCH

IN SCIENCE | ENGINEERING | TECHNOLOGY

Volume 12, Special Issue 1, April 2023

ISSN INTERNATIONAL
STANDARD
SERIAL
NUMBER
INDIA



9940 572 462



6381 907 438



ijirset@gmail.com



www.ijirset.com

An Intelligent Surveillance System Based on Supervised Machine Learning Algorithm for Detection of Crowd Activity in Public Gathering

Mr.C.Stalin Jose¹, M.Rajalingam², N.Sanjeevi³, C.Sathish Kumar⁴, D.Shreedhar⁵

Assistant Professor, Department of Electronics and Communication Engineering, Adhiyamaan College of Engineering, Krishnagiri, Tamil Nadu, India¹

UG Student, Department of Electronics and Communication Engineering, Adhiyamaan College of Engineering, Krishnagiri, Tamil Nadu, India^{2, 3, 4, 5}

ABSTRACT: This design provides an artificial intelligence grounded suspicious exertion monitoring and discovery fashion that can be enforced in surveillance cameras. This design proposes Intelligent Surveillance System grounded on Supervised machine literacy algorithm that are suitable to warn the mortal driver or concerned authority who'll take applicable action by transferring correspondence using IMAP protocol(Internet Communication Access Protocol) when over crowd exertion is detected, that will affect public peace and when an abnormal geste of a person similar as handling some munitions is detected, which might be a implicit trouble. In this design, in order to allow for a real life operation of the system, we concentrate on limiting the number of false admonitions. Further, our system also consists of when there's serious problem detected with the presence of further number of mortal beings in the frame in order to make them unconscious to avoid dangerous goods. This system can also be enforced in seminaries, public places where their will over crowd and sodalities to descry crowd conditioning of crowded places like fighting among them and having dangerous objects like glass bottle and munitions. An dispatch alert will also be generated when the crime or suspicious act is detected. therefore, our system ensures public safety in public gathering and also pupil discipline in seminaries and sodalities.

KEYWORDS: Intelligent surveillance, IMAP, Protocol ,Potential threat.

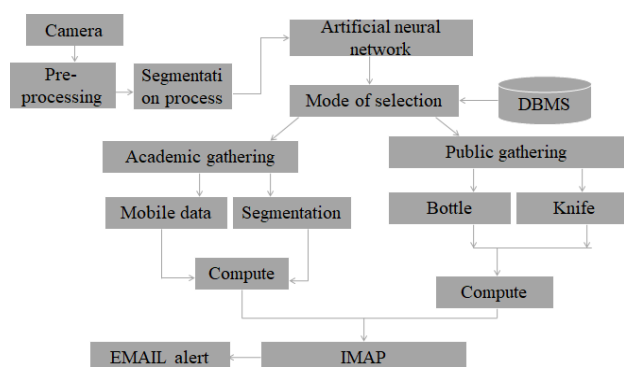
I. INTRODUCTION

Detecting suspicious exertion in crowded places is veritably important as it can help us in precluding numerous of the felonious conditioning. This can be by using videotape analytics. Videotape analytics can be used in person identification, exertion recognition, counting objects and people, etc. Suspicious conditioning are the unwanted conditioning performed by humans in certain places. Illustration for similar exertion includes talking in mobile phone, using glass bottles in classrooms, etc. similar unwanted conditioning can be detected by assaying the behaviour of the person. This design addresses about the discovery of the suspicious conditioning by assaying the frames from the videotape input. First of all, the videotape has to be converted into frames and stored. After pre-processing, the area of interest has to be abated from its background. This can be done by detecting the edges of the objects of interest and abating it from the background. After background elimination the image must be post reused to remove the noises in it. After noise junking the exertion the algorithm for face discovery has to be used to descry the faces in the image. Also, the persons in the image have to be linked. Once the persons are linked the exertion done by them must be linked. However, the concerned advanced officers must be advised and the details of the persons involved in the exertion must be transferred to them, If the exertion done by the person is set up to be suspicious.

II. RELATED WORK

[1] Rohit Agarwal, Sudhir Kumar, Rajesh M. Hegde “ Algorithms for Crowd Surveillance Using Passive Acoustic Sensors Over a Multimodal Sensor Network march., 2017 ” i) Rohit Agarwal have given a system for crowd viscosity estimation using three modalities, viz., carbon dioxide position, sound intensity position, and entered signal strength. The clustering algorithms for the point types similar as temporal, spatial, and spatio-temporal are used the emulsion of information with environment is used for effective crowd monitoring. ii) The aural goods are considered while planting the sound landing detectors and separate pre-processing functions are used to suppress the noises and reverberation goods. [2] Md. Shakowatzaman Sarker, Tan Wooi Haw and Rajasvaran Logeswaran “ Morphological grounded fashion for image segmentation ” June., 2018 i) Md. Shako at Zaman Sarker has segmentation system for focus and background estimation applicable for object shadowing. The addition of milestone for multi object segmentation and foregrounds identification is done. ii) The region proximity list (RAL) is erected for the region incorporating process. The incorporating goods are observed with different test inputs. [3] Loris Bazzani “ Beyond Multi-target Tracking Statistical Pattern Analysis of People and Groups ”, April 2019 i) Loris Bazzani have given a system for specific people identification from a group of people. ii) The seeker matching system is used for object shadowing in single and non-overlapping multi camera vids. The seeker matching is done using descriptors grounded features matching.

III. BLOCK DIAGRAM



IV. METHODOLOGY

Artificial Neural Network ANN is an effective computing system whose central theme is espoused from the analogy of natural neural network. These units, also appertained to as bumps or neurons, are simple processors which operate in parallel. This is the most useful information for neurons to break a particular problem because the weight generally excites or inhibits the signal that is being communicated. Outlines discovery is a process can be explained simply as a wind joining all the continuous points (along with the boundary), having same color or intensity. The outlines are a useful tool for shape analysis and object discovery and recognition. So how the figure is different than chancing an Edge? An edge is a point in an image where there is a sharp change in the pixel color value which does n't make it continuous in nature and sometimes makes. outlines can do a bit further than “ just ” descry edges. This means that you can request external borders of objects detected in your images. Image contouring is process of relating structural outlines of objects in an image which in turn can help us identify shape of the object. Consider an illustration below. On the left sect we have a concave cell and solid circle. As you can see it has linked 3 objects, 2 blocks and circles and their borders have been drawn with red color.

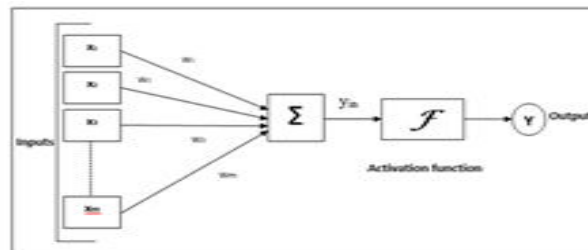


Fig.1. Model of Artificial Neural Network

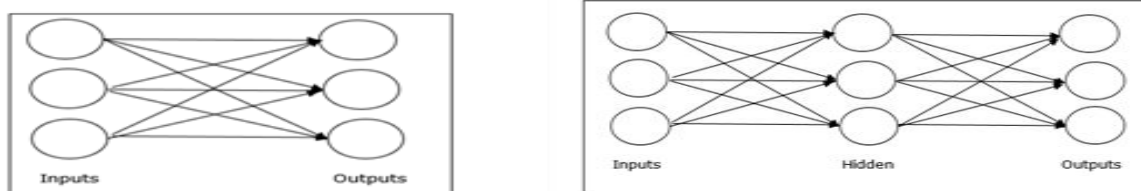


Fig. 2. Diagram of an artificial neuron with N inputs with their corresponding synaptic weights. All weighted inputs are added and an activation function controls the generation of the output signal.

V. SIMULATION RESULTS

The results of the detected armament from the videotape frame for each of the 3 classes of munitions Handguns, shanks, and heavy ordnance with the delicacy and type of detected armament is formulated in a table. Using this we can infer that our armament discovery system is fairly accurate to descry munitions in real- time surveillance vids. The longer- term work of the proposed system is to extend a lesser number of types of munitions and classifying them. The delicacy of the armament detected can be bettered by using different types of algorithms. A possible way to ameliorate this work is to descry a concealed armament which can not be detected using the normal camera. Also, assaying the geste of the people to find any suspicious conditioning like hiding the armament can be done to ameliorate this surveillance system. The alert system can also be bettered to notify multiple druggies if the armament is detected. A surveillance system with these features can be helpful to help violent crimes and give security to the public.

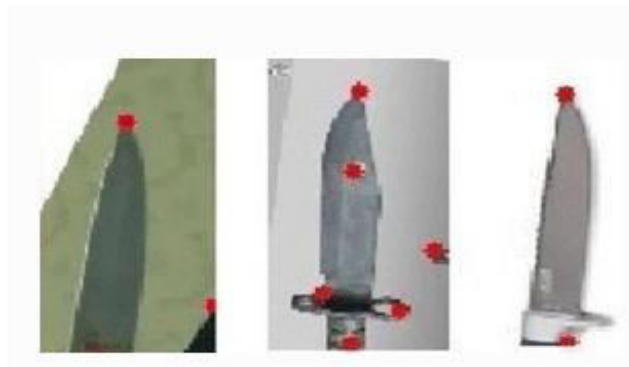


Fig. 3. Knife Detection

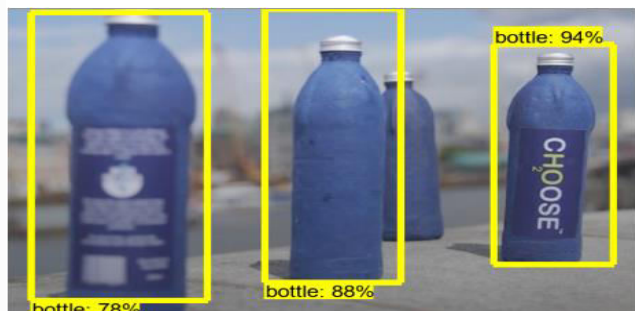


Fig 4. Bottle Detection

VI. CONCLUSION AND FUTURE WORK

In present world, nearly all the people are apprehensive of the significance of CCTV footages, but utmost of the cases these footages are being used for the disquisition purposes after a crime/ incident have been happened. The proposed model has the benefit of stopping the crime before it happens. The real time CCTV footages are being tracked and anatomized. The result of the analysis is a command to the separate authority to take an action if in case the result indicates an untoward incident is going to be. Hence this can be stopped. Indeed though the proposed system is limited to academic area, this can also be used to prognosticate further suspicious actions at public or private places. The model can be used in any script where the training should be given with the suspicious exertion suiting for that script. The model can be bettered by relating the suspicious existent from the suspicious activity. In present world, nearly all the people are apprehensive of the significance of CCTV footages, but utmost of the cases these footages are being used for the disquisition purposes after a crime/ incident have been happened. The proposed model has the benefit of stopping the crime before it happens. The real time CCTV footages are being tracked and anatomized. The result of the analysis is a command to the separate authority to take an action if in case the result indicates an untoward incident is going to be. Hence this can be stopped. Indeed though the proposed system is limited to academic area, this can also be used to prognosticate further suspicious actions at public or private places. The model can be used in any script where the training should be given with the suspicious exertion suiting for that script. The model can be bettered by relating the suspicious existent from the suspicious exertion.

REFERENCES

- [1]. P.Bhagya Divya, S. Shalini, R. Deepa, Baddeli Sravya Reddy, "examination of suspicious mortal exertion in the crowdsourced areas captured in surveillance cameras", International Research Journal of Engineering and Technology (IRJET), December 2017.
- [2]. Jitendra Musale, Akshata Gavhane, Liyakat Shaikh, Pournima Hagwane, Snehalata Tadge, "Suspicious Movement Detection and Tracking of Human Behavior and Object with Fire Discovery using A Closed Circuit TV (CCTV) cameras" 2017.
- [3]. C.G. Patil "Suspicious exertion Recognition in Video Surveillance System", Fourth International Conference on Computing Communication Control and robotization (ICCCBEA), 2018.
- [4]. Zahraa Kain, Abir Youness, Ismail El Sayad, Samih Abdul- Nabi, Hussein Kassem, "Detecting Abnormal Events in University Areas", International conference on Computer and operation, 2018.
- [5]. Tian Wanga, Meina Qia, Yingjun Deng, Yi Zhouc, Huan Wangd, Qi Lyua, Hichem Snoussie, "Abnormal event discovery grounded on analysis of movement information of videotape sequence", Composition- Optik, vol-- 2018.
- [6]. Moez Baccouche, et al. successional deep literacy for mortal action recognition. International Workshop on Human Behavior Understanding. Springer Berlin Heidelberg, 2019. 2

BIOGRAPHY



Mr. C. Stalin Jose,
Assistant Professor,
Department Of Electronics and Communication Engineering,
Adhiyamaan College of Engineering (Autonomous), Hosur.



M. Rajalingam,
Bachelor of Engineering (student),
Adhiyamaan College of Engineering (Autonomous), Hosur.

International Journal of Innovative Research in Science, Engineering and Technology

An ISO 3297: 2007 Certified Organization

Volume 12, Special Issue 1, April 2023

10th National Conference on Frontiers in Communication and Signal Processing Systems (NCFCSPS '23)

5th -6th April 2023

Organized by

Department of ECE, Adhiyamaan College of Engineering, Hosur, Tamilnadu, India



N. Sanjeevi,
Bachelor of Engineering(student),
Adhiyamaan College of Engineering(Autonomous), Hosur.



C. Sathish Kumar,
Bachelor of Engineering(student),
Adhiyamaan College of Engineering(Autonomous), Hosur.



D. Shreedhar,
Bachelor of Engineering(student),
Adhiyamaan College of Engineering(Autonomous), Hosur.



SJIF: 8.423



INTERNATIONAL
STANDARD
SERIAL
NUMBER
INTERNATIONAL CENTRE



INTERNATIONAL JOURNAL OF INNOVATIVE RESEARCH

IN SCIENCE | ENGINEERING | TECHNOLOGY

 **9940 572 462**  **6381 907 438**  **ijirset@gmail.com**



www.ijirset.com

Scan to save the contact details